



The Great Grid Upgrade

Sea Link

Sea Link

Volume 9: Examination Submissions

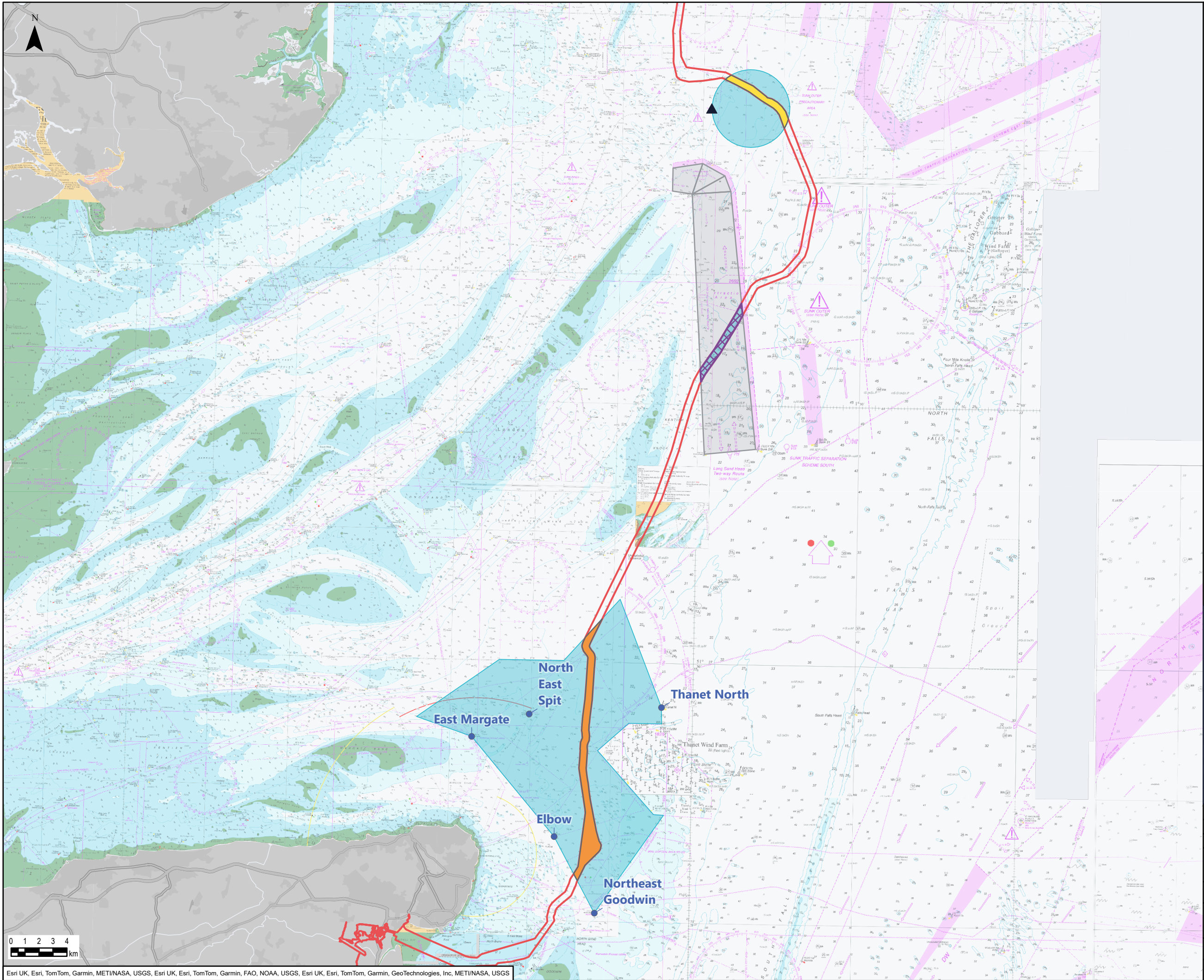
Document 9.104: Areas of Safeguarded Water Depth Plan

Planning Inspectorate Reference: EN20026

Version: A
February 2026

nationalgrid

Page intentionally blank



Legend

- Sea Link Order Limits
- Sea Link Order Limit Overlap with Areas of Safeguarded Depth
- Sunk Pilot Boarding Area Overlap
- Long Sand Head Two-Way Route Crossing Overlap
- North East Spit Overlap
- Port of London Authority (PLA) Areas of Safeguarded Depth
 - Sunk Pilot boarding area, Long Sand Head Two-Way Route crossing and North East Spit
- Navigational features
 - Sunk Pilot Boarding Station
 - Key buoy
 - Long Sand Head Two-way Route



0	27/01/2026	WATER DEPTH BASELINE STUDY	LM	JL	RJ
Rev	Date	Description	GIS	Chk	App
nationalgrid					
Scheme: SEA LINK					
Document Title: Areas of Safeguarded Water Depth Plan					
Creator: LM	Date: 27/01/2026	Checker: JL	Date:	Approver: RJ	Date:
Document Ref: FIGURE 9.104	Scale: 1:250,000	Format: A3	Sheets: 1	Rev: 0	

National Grid plc
National Grid House,
Warwick Technology Park,
Gallows Hill, Warwick.
CV34 6DA United Kingdom

Registered in England and Wales
No. 4031152
nationalgrid.com